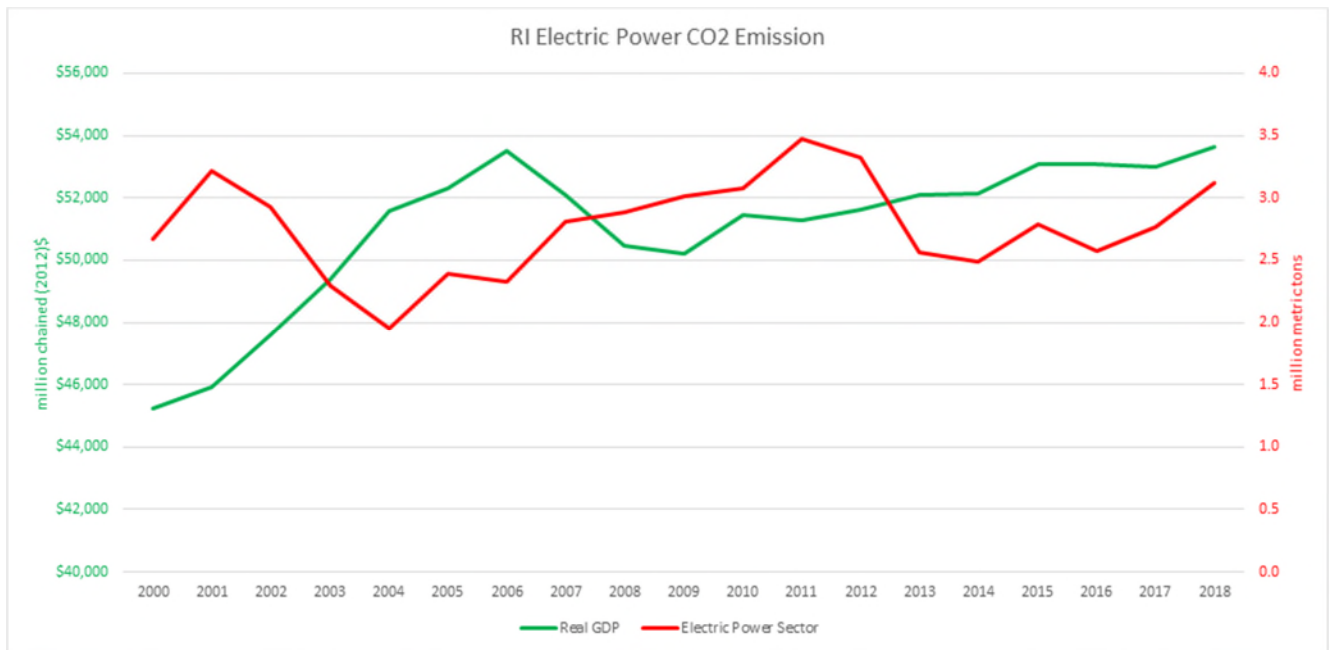
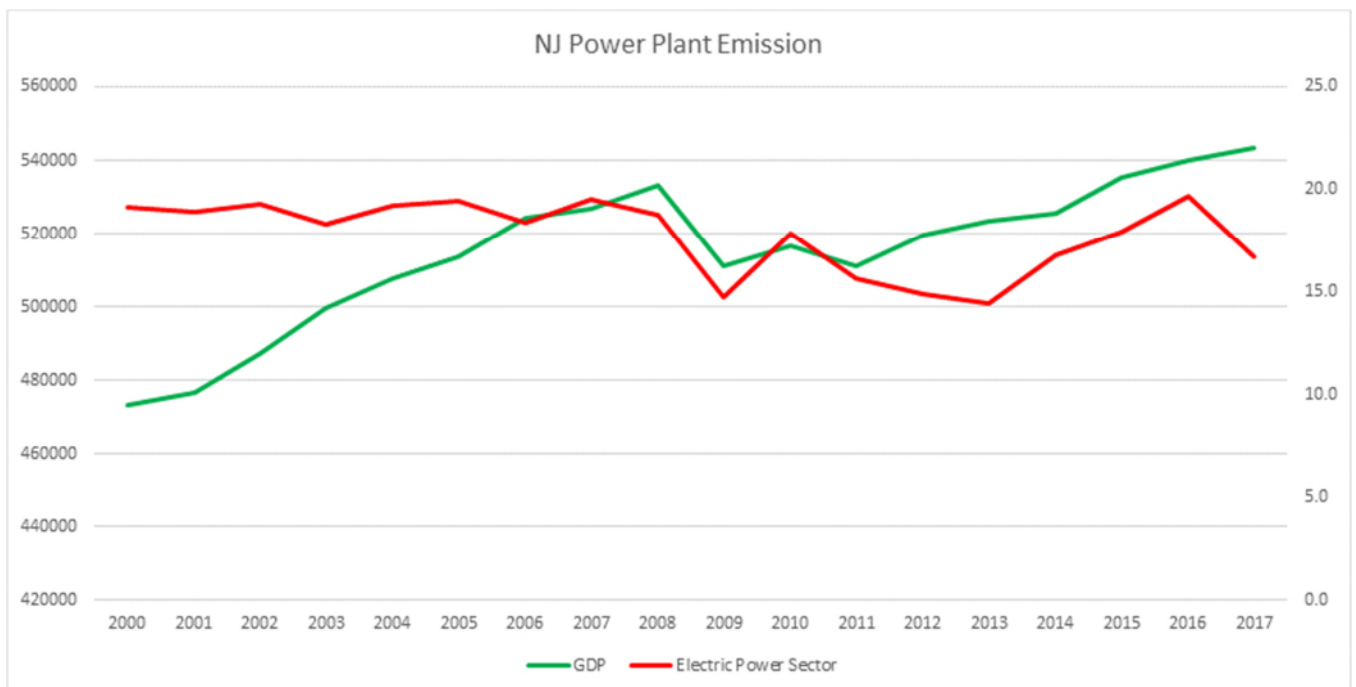


RI joined RGGI in 2007 and their electric power emissions increased for the next 4 years and since 2014 have been increasing.



NJ was a founding member of RGGI in 2009. The states GPD started dropping as soon as they joined. In 2011 NJ pulled out of RGGI and the states GPD immediately recovered. NJ has rejoined RGGI January 2020. It will be interesting to see what happens to their GPD!



Data from EIA